



LIMBTM

[The full software suite to **process, enrich and convert** cultural collections into digital assets]

**The new solution that makes
digitization projects really
easier and efficient!**

For libraries, archives, museums and all heritage collections owners

LIMB™

LIMB™ is the first software application that provides all the tools for today's digitization projects, including project inventory, image processing, quality control and multiple format exporting for long-term archiving, digital libraries, or print on demand (POD).

LIMB™ was developed with a dedication to the digitization of all culturally historical documents (books, archives, ledgers, newspapers, maps, photographs and artwork etc.). Existing image sets of TIFF or JPEG files can be processed right alongside newly digitized materials adding value to your content with new structural metadata.

LIMB™ is the perfect solution for small to medium sized digitization projects with one or more scanners. LIMB™, a stand-alone application offers single use and multiple use licenses; operators have the ability to oversee entire projects with assets in different stages of completion.

THE ALL IN ONE SOLUTION



METADATA CREATION AND MANAGEMENT

WORKFLOW MANAGEMENT

- **IMPORT:** LIMB™ can process images from any source... manual or automatic scanners or cameras on the market. LIMB™ can process images from several sources simultaneously via hot folder monitoring.
- **IMAGE PROCESSING:** LIMB™ includes both automatic and manual image processing for common tasks like deskew, crop, resize, binary conversion, contrast, brightness, etc. Additionally Limb™ provides unique image processing like background removal, page curvature correction, lighting correction and image segmentation. Limb™ can process entire collections efficiently and quickly providing higher productivity and return on investment (ROI).
- **QUALITY CONTROL:** LIMB™'s automated image quality control analyzes each image for blur, over exposure, duplication and also detects partial images. Limb™ also employs quality norm ISO test sampling; image defect tagging and reporting with a simple user interface, and rescan management utility which increases operator efficiency within the workflow.
- **STRUCTURING:** LIMB™ provides an easy to use interface for structural tagging (page numbers, covers, body, chapters, table of contents or illustrations, etc.), utilizing customizable templates, or by automatically reading the table of contents. The newly created metadata not only enriches the content, but makes the book more usable.
- **O.C.R.:** The integrated I.R.I.S. OCR engine provides OCR capabilities in 137 languages. Tiered volume pricing is provided, as well as optional integration with ABBYY version 9, or 10 Fine Reader engine, or the SAKHR engine for Arabic languages.
- **CONVERSION:** LIMB™ provides simultaneous multiple output, formats include (TIFF, Multi page TIFF, JPG, JPEG 2000, PDF, Searchable PDF, POD PDF, PDF-A). Output any combination of formats via the batch process with automatic export to a local directory or digital repository via FTP.
- **PUBLISHING:** LIMB™ provides the conduit to publish your content, metadata and media files directly to your YooLib™ digital repository assigning categories and collections to the content. Custom conduits to other digital library platforms and repositories can be developed to order.

LIMB™

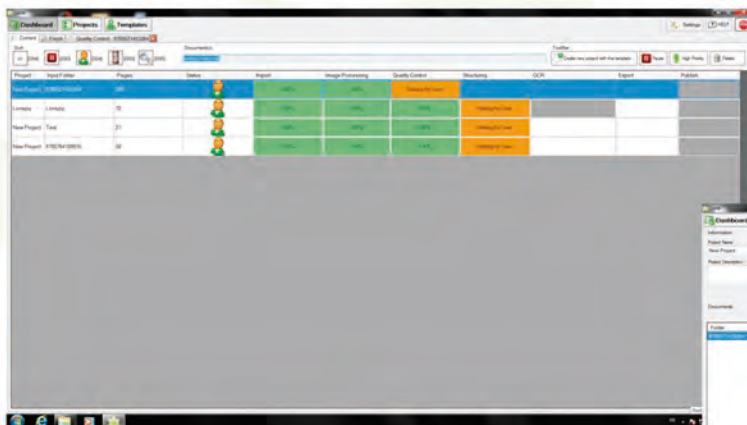
• METADATA CREATION & MANAGEMENT:

You can directly import descriptive metadata from your catalog or other OAI data files using Z39.50 protocol or use any of the following metadata file formats: MARC, MARC21, Dublin Core, csv, MODS.

Once image processing and tagging are complete, LIMB™ can export several structural metadata formats including METS, ALTO, Dublin Core, MODS. Limb™ provides customizable METS schemas for the ultimate flexibility.

• WORKFLOW MANAGEMENT:

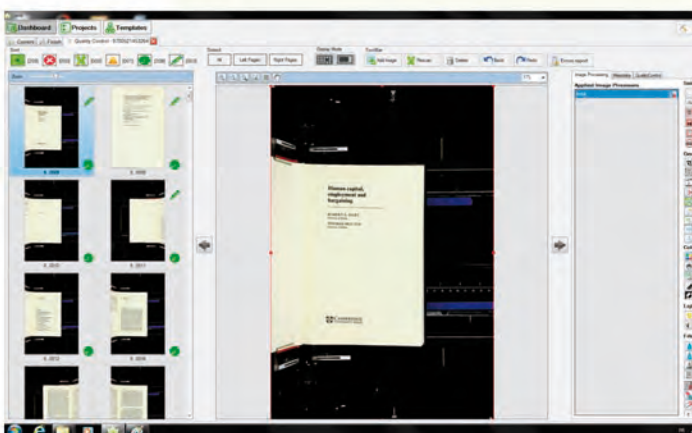
The workflow can be customized by the operator for each project. Images can be batch processed, multiple input sources for media and metadata can be assigned, QC, OCR and structuring requirements, and export formats for media and metadata can be set.



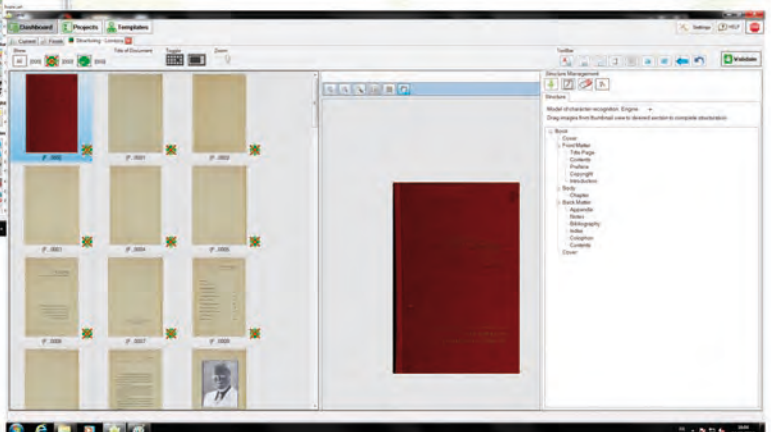
Dashboard



Template configuration



Quality control



Structuring

**THE MOST INTUITIVE
AND EASY TO USE
PRODUCTION SOFTWARE**

For libraries, archives, museums and all heritage collections owners

LIMB™

TWO VERSIONS



LIMB™ Desktop is the full version of LIMB™ but operates as single computer and single user application. This version is available with 50.000 or 200.000 pages per month for the OCR conversion. LIMB™ Imaging is the same solution as LIMB™ Desktop but without the Structuring interface and the OCR engine. LIMB™ Imaging can be upgraded into LIMB™ Desktop at a later time.

> **INCREASE**
CONTENT VALUE

> **DECREASE**
DIGITIZING COST

> **SIMPLIFY**
DIGITIZING PROCESS

> **IMPROVE**
END USER EXPERIENCE

In 2011, i2S DigiBook has purchased a controlling interest in Kirtas Technologies, bringing together two leaders in the digitization market and so becoming the largest group in the world for digitization, enhancement and web dissemination of cultural, administrative and industrial documents. Both companies come together as one with vast experience in the manual and automatic book digitization and software solutions. Since 2000, i2S DigiBook has been designing, manufacturing and marketing scanners for books, maps and any type of bound documents up to 2XA0 format as well as dedicated image-processing software suites.

With a network of resellers covering 80 countries, with research and development programs (Polinum) to improve technologies in digitizing, image and metadata processing and with hundreds of thousands documents housed and printable on demand, i2S DigiBook and Kirtas Technologies have build the best resources, solutions and experiences to help all public and private organizations to manage with success their digitizing programs and increase the potential return on investment.



i2S SA Parc Technologique Europarc
28-30 rue Jean perrin 33608 PESSAC - FRANCE
www.i2s-digibook.com • contact@i2s-digibook.com

RISTECH COMPANY, INC.
8-5115 Harvester Road • Burlington, Ontario L7L 0A3
Tel: 905-631-7451 • Fax: 905-634-4813
www.ristech.com • info@ristech.com

